



Defending Corners Using Man to Man Marking

Group 2
Amy Page
Terry Moss
Sergio Gonzalez

Key Principles to Defending Corners Man to Man

- Defend In to Out-**Protect Goal First Priority**
- When ball goes dead-**WE COME ALIVE**
- Be Prepared: know exactly **WHAT** your responsibility is
- Be Organized: know exactly **WHERE** on the pitch you should be
- Be Aware: know exactly **WHO** is where at all times
- Be Active: know **WHEN** to move and where
- **HOW** to get where you need to go-See flight of ball and attack it
- **ADAPT**-game is fluid, recognize any threat to our goal and respond accordingly. Must match the opposition physically

Man to Man Role and Responsibilities

- **Near Space (NS)**-positioned 2 yards off near post and 2 yards off end line. Responsible for balls driven into that space and runners that come into that area. Releases as the 2nd player to deal with a short corner
- **Back Post (BP)**-Positioned arms length away from back post facing service and defends balls whipped into back post. If they cannot affect ball, turn and face field to defend any balls to back post that beat goalkeeper
- **Zonal (Z)**-Position in the front pocket of the goal on the 6-yard box. Starting position can change based on type of service delivered. Responsible for attacking the ball.
- **Man Markers (M)**-Matched up with opponents' runners based on ability in air, speed, and strength. Responsible for tracking marking assignment and preventing them from getting into their desired space and winning any balls served near their mark. Man markers must bump, block, and disrupt any runs their marking assignment is trying to make
- **Top of Box (TB)**-Positioned to deal with 2nd ball and 2nd phase of corner. Also, can pickup late runners into the box. If opponent puts 2 out to ball, 1 of the top of box players goes out to ball.

2012 Manchester United Squad Roles

- **Man Markers (M):** #2 DaSilva, #3 Evra, #5 Ferdinand, #8 Anderson #10 Rooney, #12 Smalling, #16 Carrick, #17 Kagawa, #19 Welbeck
- **Zonal Player(Z):** #4 Jones, #6 Evans, #14 Vidic
- **Near Space(NS):** #3 Evra, #20 van Persie
- **Back Post(BP):** #22 Scholes, #23 Cleverly
- **Top of Box (TB):** #7 Valencia, #18 Young, #11 Giggs, #14 Hernandez, #17 Nani



DEFENSIVE CORNER STRUCTURE

NS: #20 van Persie
BP: #23 Cleverly
Z1: #10 Rooney
TOB: #7 Valencia, #19 Young

Man Markers:

#5 Ferdinand-#4 Kompany
#6 Evans-#42 Touré
#16 Carrick-#18 Barry
#2 Rafael-#45 Balotelli
#3 Evra-#16 Aguero

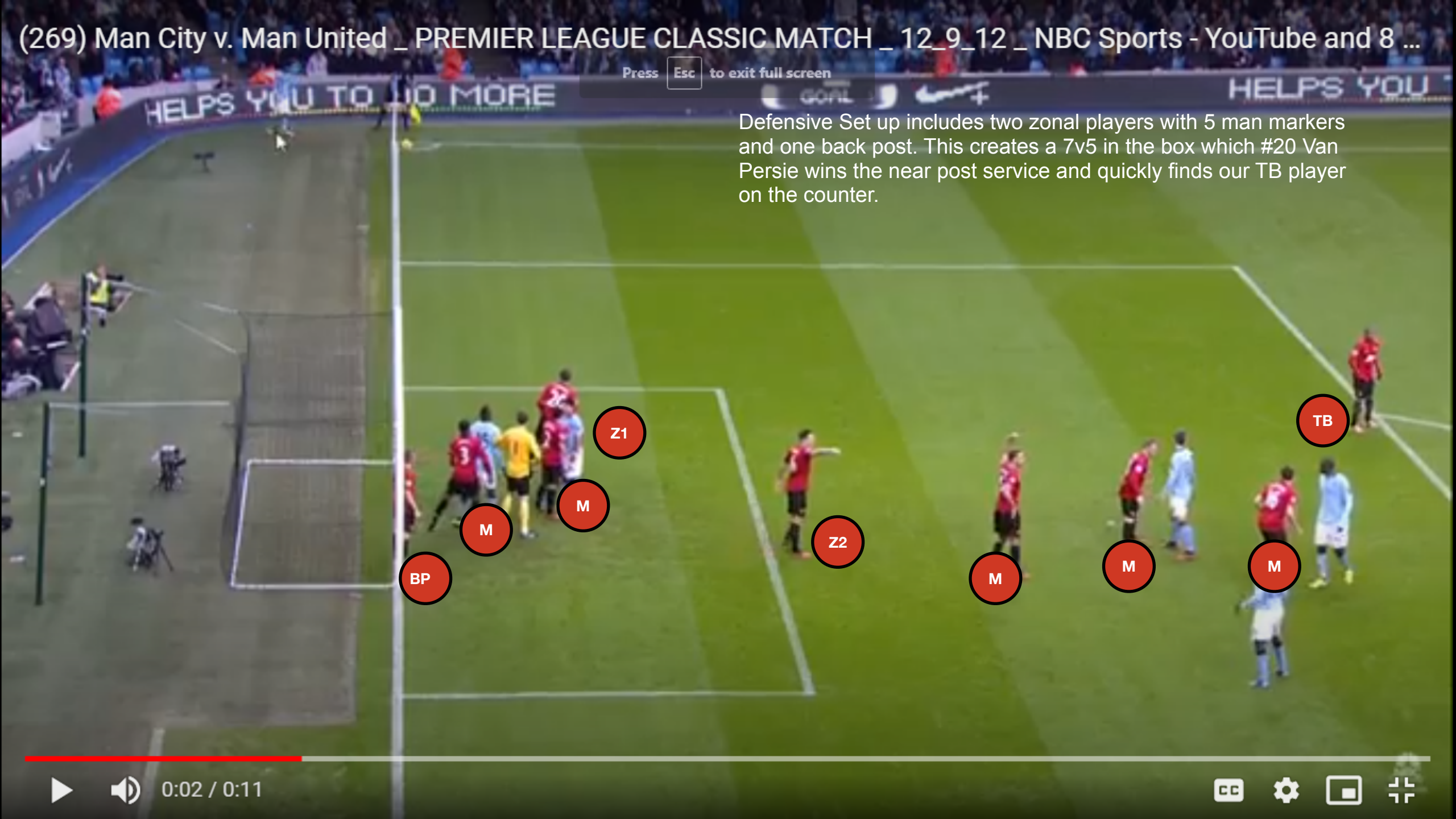


Pros to the Man to Man Set Up

- **Accountability:** Players are accountable for a specific opposition player and for preventing that player scoring.
- **Utilize Strengths:** Ability to match up players strengths and opportunity to get your players in the “most important” areas.
- **Traditional approach:** Players are more likely to be used to this style of defending set pieces this way. Allowing to focus on details instead of having to teach.
- **Analysis:** Correct match ups with thorough analysis, after you have taken care of the defensive work, there may be a good opportunity to exploit the counterattack with your faster players being matched up with their slower players or players you could drag out of position.

Press Esc to exit full screen

Defensive Set up includes two zonal players with 5 man markers and one back post. This creates a 7v5 in the box which #20 Van Persie wins the near post service and quickly finds our TB player on the counter.

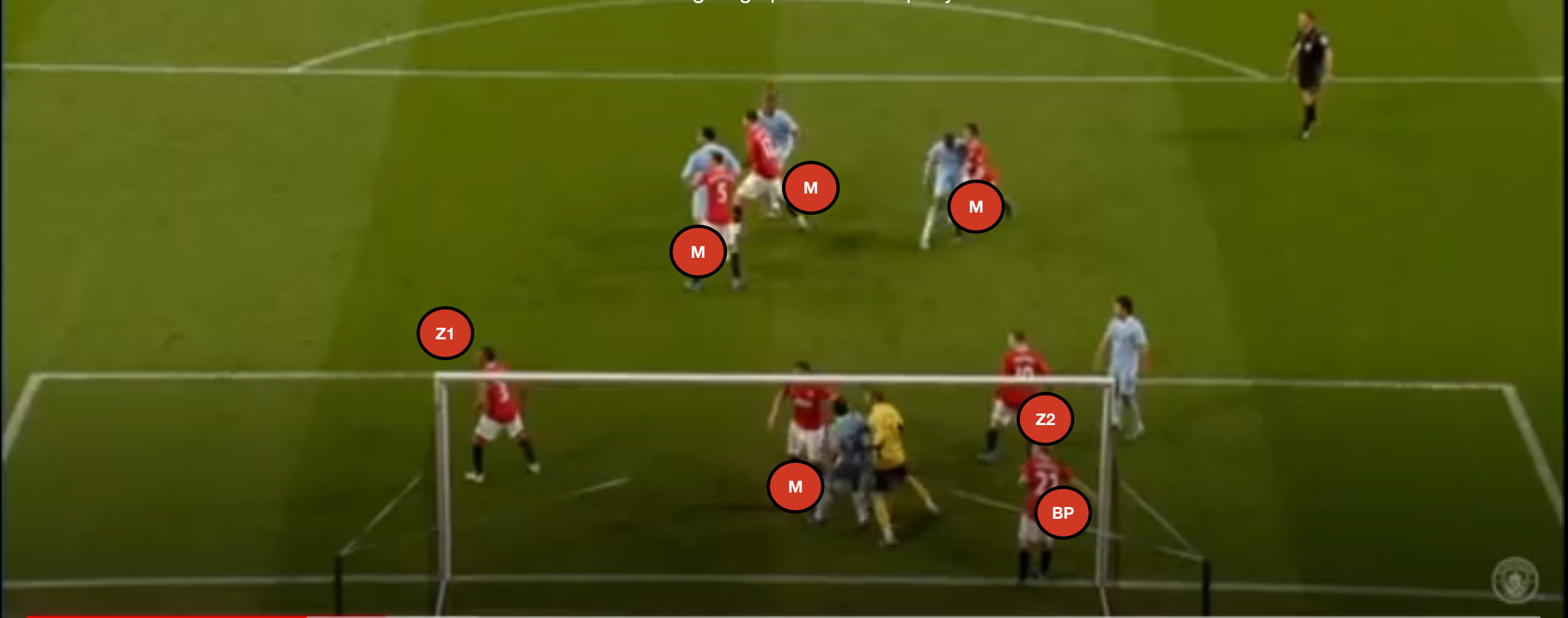


Cons to the Man to Man Set Up

- **Substitutions:** not understanding or miss match with marking assignment/role
- **Opposition Analysis:** Plan and design routines that would pull key players out of important areas to open space to attack. Opposition can also create routines that set picks, shield, or block man markers from tracking their mark.
- **Timing:** A well-timed run and ball flight could enable the attacker to get a running jump on a static defender, making the attacker favourite to win the aerial duel.
- **Match Ups:** must be spot on for speed as well as body mass, otherwise the faster attacker getting a 'run' on a slower defender would be hard to stop if the delivery were on point.
- **2nd Phase:** Can cause confusion during the 2nd phase, if the 1st ball is cleared, do you then stay man to man? If so when you regain the ball your players could be out of position. There is an argument then to switch to zonal for any 2nd phase of attack, which would allow your players to exploit the possibility of a counterattack

CITY 1 UTD 0

This corner defense features 2 zonal players #10 Rooney and #3 (Evra), with #22 (Scholes) on the back post. Three man marking players at the top of the box #5 (Ferdinand), #12 (Smalling), and #16 (Warrick) with #4 defending man on GK (De Gea). Picks and traffic forces #12 Smalling to take different route to the ball giving space for Kompany to finish.



CITY 1 UTD 0

citytv



Role/Responsibilities of the Goalkeeper in Defending Corners

- **Technical**

- Good body shape and getting to ball line with feet set to make save.
- Movement within the box around traffic
- Punching ball far and away or Catching

- **Tactical**

- Defending the Goal vs Defending the Space
- Communication with Outfield regarding roles and when to release from far post and begin movement up the field as well as “Keeper” call or “Away”.
- Recognizing Inswing vs Outswing and winning the ball inside your 6yrd box.
- Begin counter if won in the box.

CITY 1 UTD 0

citytv



Goalkeeper is responsible to show movement around the box through traffic, but be able to get to the correct ball line spot and get your feet set in order to have an attempt to make the save.

Play (k)

0:15 / 0:46

CC Settings Full Screen

Plan/Prepare/Review

- **PLAN:** Work with Analysis Department to identify opponent's key players and routines. Identify best matches up with our strengths and how we can counter.
- **PREPARE:** Dedicated set piece time each training session. Set piece video layered into video meetings as well as individual vide sent to players based on role and possible marking assignment. Packets created for players to see overall structure and understand roles/responsibilities
- **REVIEW:** Post match analysis focusing on overall structure and performance. Go over with individual players and presented in team video meeting. Conversations with players about their observations and feelings of what worked/didn't work

Implementing Program in Training/Match Day

- **TRAINING:** Dedicated time in training starting in preseason on set pieces. 10-15 minutes at the end of training. Create understanding of how important they are. Review set piece video in team video sessions as well as individual video showing roles/responsibilities.
- **MATCH DAY:** Set Piece review in pregame meeting. Focus on roles and responsibilities specific to opponent. Set piece slides hung in locker room for players to view/review on own time. Quick individual chat with each player in starting 11 to make sure role and responsibility is clear. Set piece binder on bench to go over role and responsibility with any substitutes.